

State of Wyoming Corner Record

(In compliance with the CORNER PERPETUATION AND FILING ACT, Wyoming Statutes, 1977, Section 36-11-101, et. seq., and the Rules and Regulations of the Board of Registration for Professional Engineers and Professional Land Surveyors)

Reverse side of this form may be used if more space is needed.

Record of original survey and citation of source of historical information (if corner is lost or obliterated). Description of corner monumentation evidence found and/or monument and accessories established to perpetuate the location of this corner. Sketch of relative location of monument, accessories, and reference points with course and distance to adjacent corner(s) (if determined in this survey). Method and rationale for reestablishment of lost or obliterated corner.

CC Sections 3 and 4, T.12N., R.63W., 6th P.M., Laramie County, Wyoming.

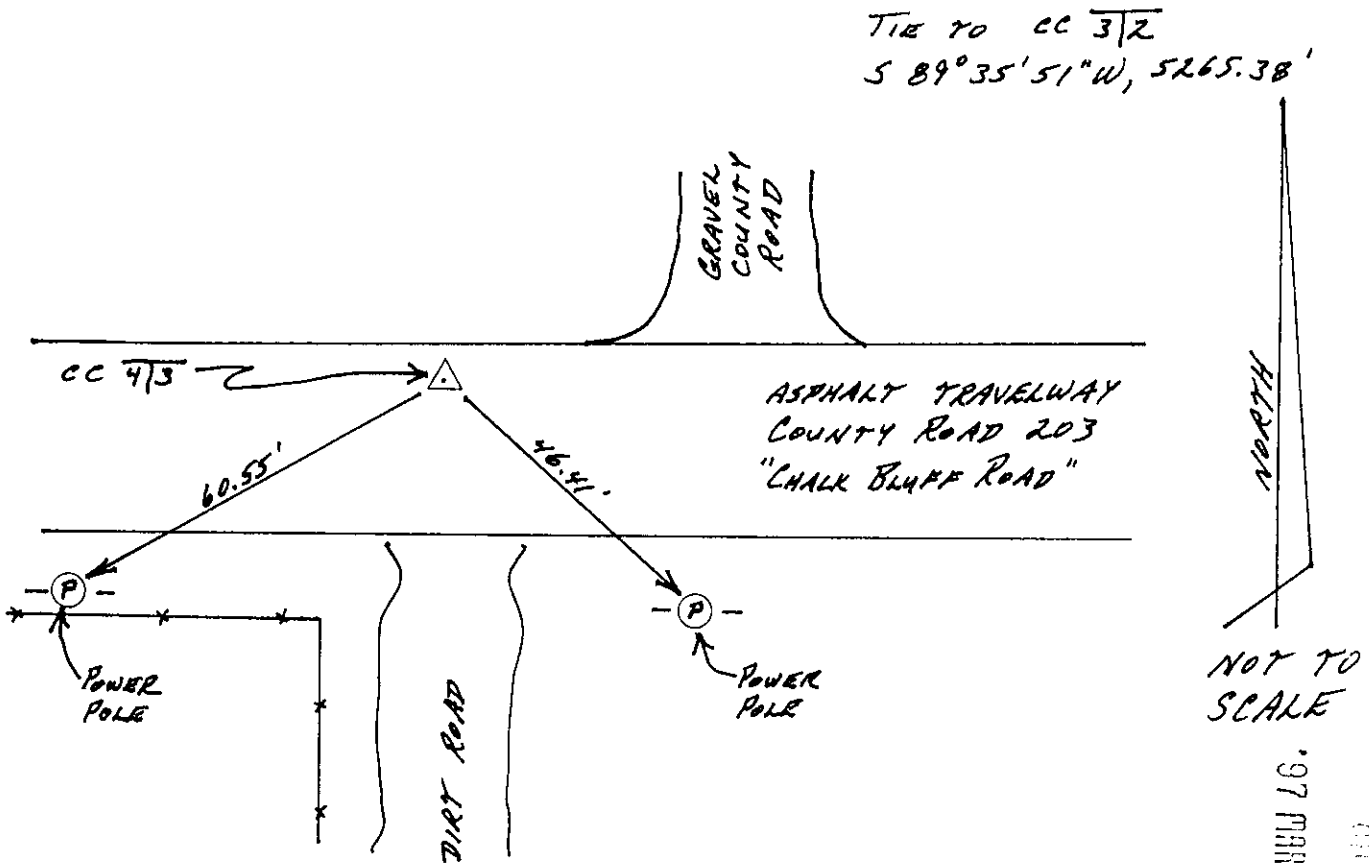
G.L.O. RECORD: 2" dia. X 36" long iron pipe with 2" brass cap, Edwin H. VanAntwerp, 1911.

OTHER RECORDS: none.

FOUND: no evidence of the G.L.O. monument. Position falls in the asphalt paved portion of a county road with no supporting evidences of the original position of the corner in the immediate area.

SET: 30" long No.5 rebar with a 2 1/2" dia. aluminum survey cap stamped in accordance with B.L.M. Manual of Instructions and with "WYO. P.L.S. NO. 4828". This corner was reestablished by the single proportionate procedure along the Third Standard Parallel, using the SC 36, T13N, R63W, and 31, T13N, R62W, and the "Witness Corner" of record by "Certified Land Corner Recordation" for the CC 5 & 6, T12N, R63W by Ed Fry, Wyo. PE & LS No. 662.

Also set a 16d nail with a 1 1/2" dia. washer in a power pole situate southeasterly 46.41'; also set a 16d nail with a 1 1/2" dia. washer in a power pole situate southwesterly 60.55'.



CROSS INDEX DIAGRAM

	1	2	3	4	5	6	7	8	9	10	11	12	13	14	15	16	17	18	19	20	21	22	23	24	25	26	
A																											
B																											
C																											
D																											
E																											
F																											
G																											
H																											
J																											
K																											
L																											
M																											
N																											
O																											
P																											
Q																											
R																											
S																											
T																											
U																											
V																											
W																											
X																											
Y																											
Z																											

Date of Field Work: March 1997
 Office Reference: _____
 Firm/Agency, Address
John J. Studley, Wyo. P.L.S. No. 4828
3509 Frontier Street
Cheyenne, Wyoming 82001
 Telephone Number: (307) 634-3358

This corner record was prepared by me or under my direction and supervision of a Professional Land Surveyor.

Corner Name: CC Section: 3 & 4, T 12N, R 63W, 6th P.M.
 Cross-Index No.: A-13
 SBRPEPLS/PLSW: March 1994

LARAMIE COUNTY CLERK
 JOHN J. STUDLEY
 97 PAR 31
 PN 1 10

200175